

**AIR FORCE SCHOOL, TEZPUR**  
**REPORT ON NODAL TEACHERS**  
**ON**  
**SAFAL ORIENTATION PROGRAMME**

**Resource person: Mrs Anjali Chhabra**

**Mrs Pihu Banerjee**

**Date: 7<sup>th</sup> June 2024**

**Venue: APS, Narangi, Gauhati**

**INTRODUCTION:**

SAFAL is a diagnostic assessment to measure the achievement levels of students across grades 3, 5 and 8 across core competencies in circular areas of language, Mathematics and Environmental Science. The primary objective of SAFAL is to assess and analyze students' learning levels effectively. By identifying areas of strength and weakness, SAFAL aims to facilitate targeted interventions to enhance learning outcomes.

**KEY FEATURES OF THE SAFAL ASSESSMENT**



**Test core competencies**  
and moves away from **rote**  
**memorisation**



**Conduct assessments**  
for all schools  
(Govt.+Pvt.)



**Student level data is**  
**anonymised**, school level  
reports of their overall  
outcomes



Use data for **continuous**  
**diagnosis and**  
**development**

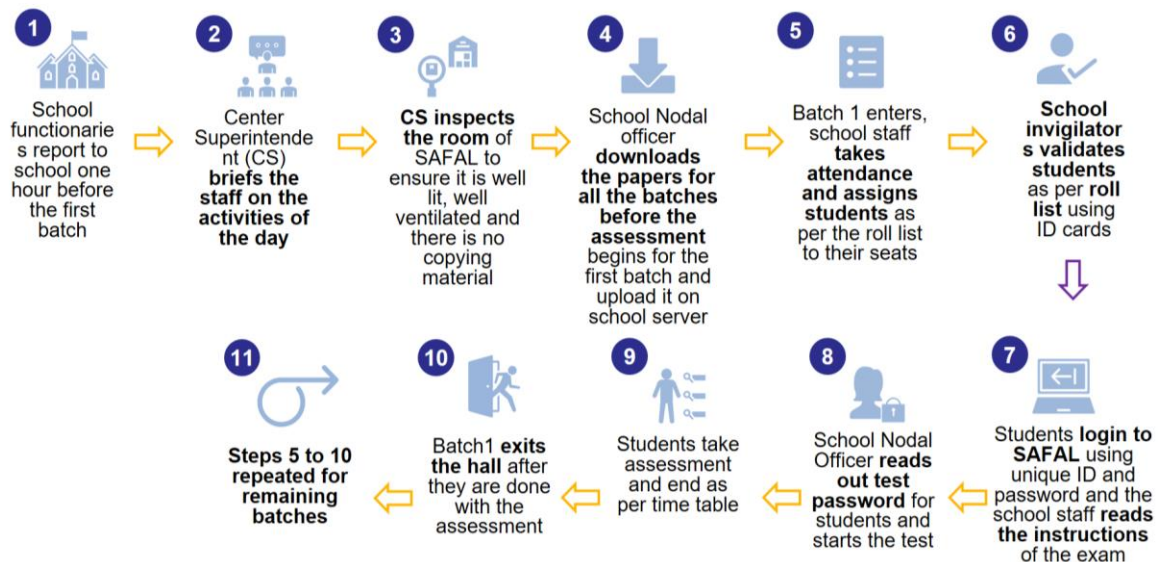
## USE OF SAFAL DATA

SAFAL data would generate classroom level insights that can be used by teachers and school heads to improve learning outcomes by developing classroom level interventions.

### How can schools and teachers use SAFAL

1. School report cards will identify learning gaps in students.
2. Reports will suggest classroom-level interventions to carry out remedial actions to fill the learning gaps.
3. SAFAL results are NOT to be used to pass/fail students, they are only to be used for diagnostic purposes
4. With SAFAL being conducted annually, schools can use the data to track progress and for continuous development

### SEQUENCE OF ACTIVITIES ON THE DAY OF SAFAL



### CONCLUSION:

Overall session proved to be incredibly helpful as it is targeted to enhance learning outcomes

## GLIMPSES OF WORKSHOP ON SAFAL

